

**Advanced Regional Response
Training Center**

Emergency Management Program

Nursing Homes

Advanced Regional Response
Training Center

SECTION 1

*DISCUSSION:
EMERGENCY MANAGEMENT PROGRAM*

Advanced Regional Response
Training Center

**Nursing Home
Care Provision Statistics**

Nursing Homes provide substantial health care benefits to their communities during normal times:

- Demographics and statistics regarding NH services:
 - There are approximately 16,000 NHs in the US
 - 1.75 million beds
 - 1.50 million beds occupied = 85% occupancy rate
 - 1.3 million residents > 65 years of age
 - 175,000 previously lived alone or have no family
- Nursing Homes provide comprehensive care, including physical, mental, dental, hospice, hearing, vision, therapy, etc.

Advanced Regional Response
Training Center

Nursing Home Care Provision Statistics

Nursing Homes provide substantial health care benefits to their communities during normal times:

- Demographics and statistics regarding NH services:
 - Only 1.5 – 1.75% of residents need NO assistance with ADLs
 - 50% need assistance with ALL 5 ADLs
 - > 50% are totally dependent or extensively dependent with bathing, dressing, toileting and transferring
 - Leading illness is cardiovascular, mental disorders second
 - 15% have diseases of the nervous system and sense organs
 - Approximately 30% are incontinent of bowel and bladder
 - Approximately 45 – 50% take 9 or more medications daily



Advanced Regional Response
Training Center

Nursing Home Role in Disasters


Nursing Homes play a vital role in community disaster response by:

- Managing Internal Emergencies
- Mass Casualty Care
- Reception and Triage
- Reception of Hospital Overflow
- Maintaining Ongoing Routine Patient Care
- Mental Health Services
- Bio-Agent Identification and Reporting
- Staff Protection
- Mass Prophylaxis
- Risk Communication
- Provide Volunteer Staff
- Receive/Utilize Volunteers
- Community/Cientele Preparedness
- Sheltering

Advanced Regional Response
Training Center

Types of Post-Disaster Response Facilities

- **Permanent**
 - Hospitals
 - Acute Care Facilities
 - Primary Care Facilities
 - Community Health Centers
 - Public Health Centers
 - » State Health Agencies
 - Physician Offices
 - Urgi-Care Centers
 - **Nursing Home Facilities**
- **Temporary**
 - Mass Shelters
 - Medical Needs Shelters
 - Comfort Care Centers
 - Alternative Care Sites



Advanced Regional Response
Training Center

Emergency Management Program (EMP) Expectations – For All Agencies:

- At the “Core” of an EMP – there are 3 key elements:
 - Safeguarding human resources
 - Protecting physical resources
 - Ensuring business continuity

Advanced Regional Response
Training Center

Nursing Home (NH) Emergency Management Program (EMP) Expectations

- At the “Core” of an EMP for Nursing Homes – the 3 key elements that apply are:
 - Protecting health center staff
 - Protecting health center patients
 - Safeguarding the ability to deliver health care

Advanced Regional Response
Training Center

Four Stages of Disaster Planning:

- **Mitigation:**
 - Pre-event planning and actions which aim to lessen the effects of the potential disaster
- **Preparedness**
 - Actions taken before an emergency to prepare the organization for a response
- **Response**
 - Activities to address the immediate and short-term effects of an emergency or disaster. Response includes immediate actions to save lives, protect property and meet basic human needs
- **Recovery**
 - Activities that occur following disaster response that are designed to help an organization or community return to a pre disaster level of function

Advanced Regional Response
Training Center

Underlying Theory of Emergency Response

- Most emergencies are limited in scope and range, and are managed at the local level
- Private sector entities have a key role related to contributing necessary resources and services to help NH be self-contained/self-sufficient
- ***In this context – NHs are a vital part of effective emergency response in the communities they serve.***

Advanced Regional Response
Training Center

So, where are you?

Lets talk about your Emergency Management Program.....

Advanced Regional Response
Training Center

SECTION 2


NIMS/ICS/NRF

Advanced Regional Response
Training Center

Emergency Response Related Federal Policies

- National Incident Management System (NIMS)
- Incident Command System (ICS)
- National Response Framework (NRF)

****While it is not a requirement for NHs at this time, compliance with NIMS is encouraged.**



Advanced Regional Response
Training Center

NIMS

National Incident Management System

- A standardized, all-hazard incident and resource management concept.
- A comprehensive, national approach to incident management that is applicable to all jurisdictional levels and across functional disciplines.
- The intent is to be applicable across a full spectrum of potential incidents and hazard scenarios, regardless of size or complexity.
- Designed to improve coordination and cooperation between public and private entities in domestic management activities.
- Response actions will be based on the ICS system.
- All First Responders comply with NIMS training requirements.

Advanced Regional Response
Training Center

NIMS

National Incident Management System

Established to create uniformity:

- Organization Structure (ICS)
- Plans
- Training/Exercises
- Resources
- Communications/Technology

Organization

Advanced Regional Response
Training Center

NIMS- Outline of the 14 Elements

1. Adoption of NIMS and NRF
2. Federal Preparedness awards support NIMS Implementation
3. Revise and Update Plans to incorporate NIMS and NRF components
4. Mutual Aid Agreements
5. Training and Exercises (IS 100,200, 700)
6. Training and Exercises (IS 800)
7. Apply NIMS and ICS to all training and exercises
8. Equipment, communication and interoperability
9. Common and consistent terminology
10. Systems, tools and processes for consistent and accurate information
11. Manage events with ICS and NIMS
12. Use of Incident Action Planning and common communication plans
13. Adopt Public Information (PI) principles by using both JIS and JIC during events
14. PI Procedures must gather, verify, coordinate and disseminate information

Advanced Regional Response
Training Center

NIMS and the NH- How the 14 Elements Might Apply:

1. Adopt the NIMS and NRF systems for development and activation of the NH emergency preparedness plan. A statement and incorporation of concepts, terminology, etc. into NH EMP.
2. Maintain an inventory of all equipment, supplies, medications furnished to the NH with Federal or State emergency planning funds.
3. Implement a systematic approach to reviewing, revising and updating your NIMS/NRF plans. Include Organization Chart and how/when to implement ICS.
4. Develop and maintain mutual aid agreements to facilitate interagency cooperation during disasters and emergency response.
5. Ensure that personnel who participate in disaster preparedness (approximately 25%) are trained in IS 100, 200 and 700. Maintain documentation on all personnel trained.
6. Insure that the organization's top level positions (= 2-3 persons and no > than 5-10 persons) are trained in IS 800. Maintain the training records.
7. Utilize NIMS and ICS in at least 2 training/exercises events per year. Maintain documentation demonstrating principles applied.
8. Create atmosphere/plan of interoperability for equipment, communication and personnel. Equipment should be HPP standardized, communications should be redundant and common to emergency response personnel and personnel should be cross trained.
9. Common and consistent terminology should be used. Speak plain English so that everyone will have same understanding of event, regardless of their roles in response.

Advanced Regional Response Training Center

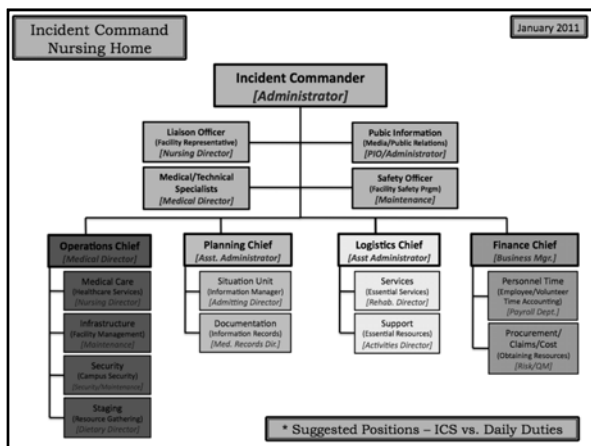
NIMS and the NH- How the 14 Elements Might Apply (continued):

- Utilize HICS documents and systems (AIMS) to provide tools for consistent and accurate information. Must also identify a Public Information Officer (PIO) to establish working relationships with local agencies. Should have plans for: initially, mid term and at termination of event
- Manage events utilizing concepts, structure and terminology of , HICS, ICS, NIMS. Should have an incident action plan and a common communications plan. All documentation should include description of event, scenario and record of event (need a historian). If a real event is documented correctly, it can be used as one of the two required annual training events.
- Utilize an Incident Action Planning and communication plans in drills and real events. Document what occurs in command post. Examples: can use HICS form 201, dry erase board or excel spread sheet.
- Adopt Joint Information System (JIS) and Joint Information Center (JIC) during events for disseminating Public Information (PI). Write a plan and show how you use it (documentation).
- Disaster planner and Information officer review plan and make sure plan says how you will coordinate, verify, coordinate and disseminate information regarding information you want to communicate.

Advanced Regional Response Training Center

ICS

Incident Command System



Advanced Regional Response
Training Center

ICS is:

- A Proven Emergency Management System Based on Military and Fire Management Chains of Command
- Designed for all hazards and all sizes of response, as necessary
- Flexible and adaptable – only activate what is needed.
- Manages routine or planned events
- Provides logistical & administrative support to operational personnel
- Improves Communication – Formal and Informal
- Cost effective – avoids duplication of effort
- Allows for adaptation into a common response structure

Advanced Regional Response
Training Center

Characteristics of ICS

- Common Terminology
- Modular organization
- Reliance on an Incident Action Plan (IAP)
- Management by objectives
- Chain of command and Unity of command
- Unified Command
- Manageable Span of Control
- Emergency Operations Centers
- Resource Management
- Information, Intelligence and Communications

Advanced Regional Response
Training Center

To have an effective EMP each NH should:

- Build on existing relationships with natural partners at the local level:
 - Hospitals
 - County Health Departments
 - Emergency Management Agencies
- Build on existing relationships with natural partners at the state level:
 - State Hospital Associations
 - State Health Department
 - State Emergency Management
 - State Nursing Home Association



Advanced Regional Response Training Center

State Nursing Home Associations

NHs are encouraged to work with their associated State Nursing Home Associations.

The State Nursing Home Association is expected to provide state leadership to the NH through:

- Integration of nursing homes into Statewide and community preparedness and response plans
- Direct assistance in the area of Emergency Preparedness Planning to NHs



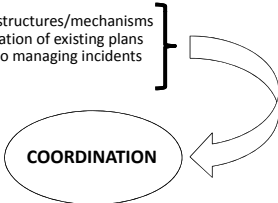
Advanced Regional Response Training Center

National Response Framework

Went into effect in March 2008.
Updated and revised the National Response Plan.

The NRF establishes . . .

- Federal coordination structures/mechanisms
- Direction for incorporation of existing plans
- Consistent approach to managing incidents

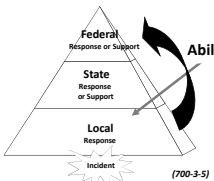


Advanced Regional Response Training Center

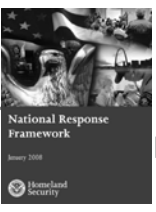
Relationship: NIMS vs. NRF

NIMS

- Aligns command, control, organization structure, terminology, communication protocols, & resources/resource-typing
- Used for all events



NRF



- Integrates & applies Federal resources, knowledge, & abilities before, during, & after an incident
- Implemented for incidents requiring Federal coordination

Resources, Knowledge, Abilities

Advanced Regional Response Training Center

NRF Structure

Base Framework	Describes the domestic incident management structures and processes
Appendixes	Include acronyms, definitions, authorities, and a compendium of national interagency plans
Emergency Support Function Annexes - 15	Describe the structures and responsibilities for coordinating incident resource support
Support Annexes	Provide guidance for the functional processes and administrative requirements
Incident Annexes	Address contingency or hazard situations requiring specialized application of the NRF

Advanced Regional Response Training Center

Scope of Emergency Support Functions

ESF #1 – Transportation Department of Transportation	<ul style="list-style-type: none"> *Aviation/airspace management and control *Transportation safety *Restoration/recovery of transportation infrastructure *Movement restrictions *Damage and impact assessment
ESF #2 – Communications Homeland Security/NCS	<ul style="list-style-type: none"> *Coordination with telecommunications and information technology industries *Restoration and repair of telecommunications infrastructure *Protection, restoration, and sustainment of national cyber and information technology resources *Oversight of communications within the Federal incident management and response structures
ESF #3 – Public Works and Engineering Department of Defense US Army Corps of Engineers	<ul style="list-style-type: none"> *Infrastructure protection and emergency repair *Infrastructure restoration *Engineering services and construction management *Emergency contracting support for life-saving and life-sustaining services
ESF #4 – Firefighting Department of Agriculture	<ul style="list-style-type: none"> *Coordination of Federal firefighting activities *Support to wildland, rural, and urban firefighting operations

Advanced Regional Response Training Center

Scope of Emergency Support Functions

ESF #5 – Emergency Management Homeland Security/FEMA	<ul style="list-style-type: none"> *Coordination of incident management and response efforts *Issuance of mission assignments *Resource and human capital *Incident action planning *Financial management
ESF #6 – Mass Care, Emergency Assistance, Housing, and Human Services Homeland Security/FEMA	<ul style="list-style-type: none"> *Mass care *Emergency assistance *Disaster housing *Human services
ESF #7 – Logistics Management and Resource Support Homeland Security/FEMA	<ul style="list-style-type: none"> *Comprehensive, national incident logistics planning, management, and sustainment capability *Resource support (facility space, office equipment and supplies, contracting services, etc.)
ESF #8 – Public Health and Medical Services Dept Health & Human Svcs.	<ul style="list-style-type: none"> *Public health *Medical *Mental health services *Mass fatality management

Advanced Regional Response Training Center

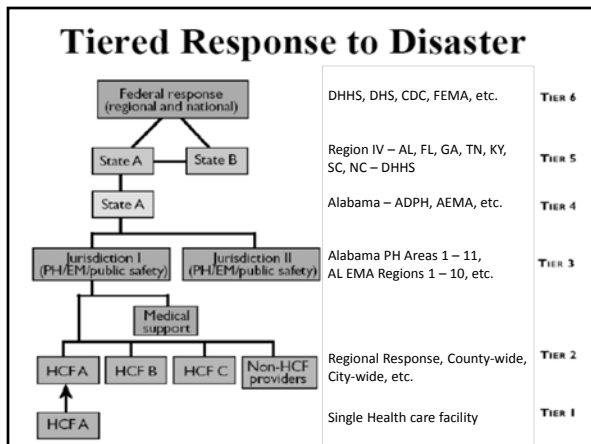
Scope of Emergency Support Functions

ESF #9 – Search and Rescue Homeland Security/FEMA	<ul style="list-style-type: none"> Life-saving assistance Search and rescue operations
ESF #10 – Oil and Hazardous Materials Response EPA	<ul style="list-style-type: none"> Oil and hazardous materials (chemical, biological, radiological, etc.) response Environmental short- and long-term cleanup
ESF #11 – Agriculture and Natural Resources Department of Agriculture	<ul style="list-style-type: none"> Nutrition assistance Animal and plant disease and pest response Food safety and security Natural and cultural resources and historic properties protection and restoration Safety and well-being of household pets
ESF #12 – Energy Department of Energy	<ul style="list-style-type: none"> Energy infrastructure assessment, repair, and restoration Energy industry utilities coordination Energy forecast

Advanced Regional Response Training Center

Scope of Emergency Support Functions

ESF #13 – Public Safety and Security Department of Justice	<ul style="list-style-type: none"> Facility and resource security Security planning and technical resource assistance Public safety and security support Support to access, traffic, and crowd control
ESF #14 – Long-Term Community Recovery Homeland Security/FEMA	<ul style="list-style-type: none"> Social and economic community impact assessment Long-term community recovery assistance to States, local governments, and the private sector Analysis and review of mitigation program implementation
ESF #15 – External Affairs Homeland Security/FEMA	<ul style="list-style-type: none"> Emergency public information and protective action guidance Media and community relations Congressional and international affairs Tribal and insular affairs



Advanced Regional Response Training Center

Types of Events Identified in Hazard Threat Vulnerability Assessment (HTVA)

- Some different types of potential Hazards/threats to plan for:

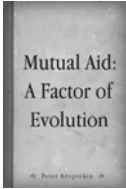
Natural Disasters	Mass Casualty Accidents	Technological Events	Human Caused Events	Terrorist Events
<ul style="list-style-type: none"> Severe weather Hurricanes Tornadoes Fires Flooding Earthquakes Widespread life-threatening infectious disease outbreaks such as influenza Mud Slides 	<ul style="list-style-type: none"> Bus or train accidents Airplane accidents Hostage events Natural disasters Terrorist events Human Caused events 	<ul style="list-style-type: none"> Utility and Power failures Communication failures IT failure Water supply failures Critical resource shortages Fuel shortages 	<ul style="list-style-type: none"> Urban fires Chemical spills Civil Disorder Industrial Plant accidents Nuclear plant malfunctions causing radiation release Transportation accidents, such as plane crash or passenger train derailment 	<ul style="list-style-type: none"> CBRNE (Biological, Chemical, Radiological, Nuclear, Explosive Agents) Bomb threats Sabotage Armed insurrection, which threaten life or property Hijacking

Advanced Regional Response Training Center

What makes up an EMP? (con't)

Establish Mutual Aid Agreements:

- Work with other community providers – Other NHs, hospitals, rural health clinics,
- Work towards interoperability – sharing of resources like personnel, equipment and supplies



Advanced Regional Response Training Center

Additional Components of an EMP

- Continuity of Operations
- Command and Control
- Training and Exercises
- Staffing
- Surge
- Medical and Non-medical Supplies
- Pharmaceuticals
- Security
- Evacuation
- Decontamination
- Isolation
- Power Supplies
- Transportation
- Water/Sanitation
- Communications
- Data Reporting
- Medical Records
- Behavioral Needs
- Access for Special Populations

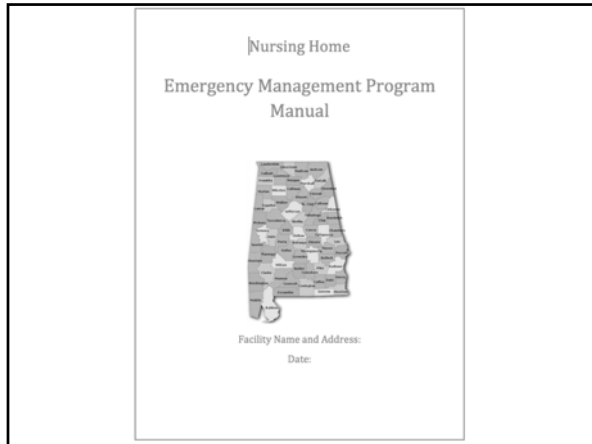


Table of Contents

- 1. General Information.....
 - 1.1. Policy and Primary Objectives.....
 - 1.2. Purpose and Scope.....
 - 1.3. Activation of Emergency Management Plan
 - 1.4. General Hazard Vulnerability Analysis.....
 - 1.5. Key Personnel
 - 1.6. Community Coordination
- 2. Notification.....
 - 2.1. Telephone List – Duties External Disaster
 - 2.2. Key Personnel – Phone/Pager Notification
 - 2.3. Facility Checklist
- 3. Continuity of Operations.....
 - 3.1. Goals & Planning Elements.....
 - 3.2. Emergency Generator
- 4. Staff
- 4.1. Volunteer Staff.....
- 4.2. Volunteer Staff Registration/Credentialing Form.....
- 4.3. Staffing Requirements for Sheltering in Place and evacuation
- 4.4. Staff Family Members

Table of Contents (con't)

- 5. Incident Command System
- 5.1. Activation Of Incident Command System.....
- 5.2. EOC Activation Criteria And Setup.....
- 5.3. Direction and Control
- 6. Hazard Vulnerability Analysis (HVA).....
 - 6.1. HVA – General
 - 6.2. Determination Of Potential Risk
 - 6.3. Mitigation, Preparedness, Response & Recovery.....
- 7. Incident Action Plan.....
 - 7.1. Action Plan Development.....
 - 7.2. Action Plan form.....
- 8. Communications/IT
- 8.1. Redundancy Of Communication Systems
- 8.2. Public Information Officer.....
- 9. Facility Checklist
- 9.1. General Facilities Checklist
- 9.2. Management Of Environment

Table of Contents (con't)

- 10. Shelter in Place
 - 10.1 Decision Criteria
 - 10.2 Specific Resident needs
 - 10.3 Securing the facility
 - 10.4 Emergency power
 - 10.5 Water Supply
 - 10.6 Staffing
 - 10.7 Medication
 - 10.8 Serving as host facility

- 11. Provisions for Evacuation
 - 11.1 Transportation Contract
 - 11.2 Evacuation Procedures
 - 11.3 Host Facility Agreement
 - 11.4 Food Supply
 - 11.5 Medications
 - 11.6 Transfer of Medical Records
 - 11.7 Staffing
 - 11.8 Resident Personal Belonging
 - 11.9 Re-entry
 - 11.10 Water Supply
 - 11.11 Evacuation Route

Table of Contents (con't)

- 12. Annexes
 - 12.1. Evacuation General
 - 12.2. Evacuation Floods
 - 12.3. Surge Hospital.....
 - 12.4. Snow/Ice Emergency.....
 - 12.5. Internal Disaster Plan: Fire.....
 - 12.6. Weapons of Mass Destruction.....
 - 12.7. Communicable Disease.....

**Advanced Regional Response
Training Center**

Questions ?
